

EMC NETWORKER FAST START

An integrated, packaged solution for the small to midsize organization

ESSENTIALS

EMC NetWorker Fast Start

- Automated installation and deployment of components ensures installation in less than a day.
- Protect mission-critical virtual environments with market-leading support for VMware and Hyper-V
- Enterprise-class capabilities at an affordable price
- Integrated application support

EMC® NetWorker® is an enterprise-class backup application that provides complete backup and recovery, combining traditional and deduplicated backup in one central solution. NetWorker Fast Start delivers these benefits and is easy for the small to midsize organization to obtain.

NetWorker Fast Start is an integrated, packaged solution that simplifies licensing, installation, and configuration—all at an affordable price. It provides:

- Quick and easy ordering
- Pricing that's over 30 percent less than leading competitive solutions
- Simple installation via installation wizards and remote push capabilities
- One solution—Fast Start is the full-version NetWorker and allows you to easily add any capability, such as integrated deduplication with Avamar or Data Domain

HIGH-SPEED BACKUP AND RECOVERY

NetWorker Fast Start uses the same NetWorker architecture that Fortune 500 customers rely on for protecting their data. Its reliability and speed will shorten your backup windows while increasing the dependability of successful backups. Having successful backups is important, but recovery is often a race against the clock. Fast Start delivers recovery of your critical files within seconds. This enterprise speed will save you time and resources during those crucial times when your organization needs it most.

COMPLETE VIRTUAL ENVIRONMENT PROTECTION

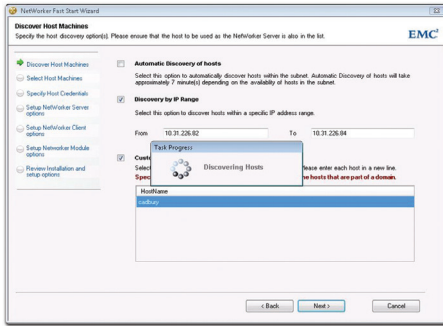
No matter where you are in your adoption of virtualization, NetWorker Fast Start provides easy protection. Granular and application consistent backup is effortless using the included capabilities. A single pass virtual machine image backup provides numerous recovery options ranging from granular for individual file restore to full image for complete disaster recovery. NetWorker Fast Start's virtual environment options reduces cost and complexity and ensures protection that you demand for your mission critical virtual environment.

Integration with VMware vCenter provides additional ease of use capabilities. Automatic discovery of new virtual machines and the ability to flag those that are not yet protected provides an additional layer of defense. VMware integration also provides a graphical map of your environment. This unique map allows easy setup and adjustment of virtual machine backups for load balancing and fine tuning.



Join the NetWorker Online community to meet fellow users and to share best practices.

www.emc.com/networkeronline



EASY INSTALLATION AND CONFIGURATION

The Fast Start wizards make installation easy by reducing the number of clicks and screens by up to 80 percent. The wizards also simplify installation with:

- Automated discovery of all Windows and Linux hosts
- Automated installation of NetWorker Server and Client with minimal user interaction
- Automated discovery and remote installation of application modules
- Automated creation of NetWorker clients, groups, and schedules required for operations
- Automated identification of disk device for backup
- Automated configuration of virtual tape libraries and auto-changers

GETTING STARTED WITH DEDUPLICATION

EMC NetWorker is the only backup software application to provide seamless integration with the industry's two leading deduplication solutions—EMC Avamar® and EMC Data Domain®. Deduplication revolutionizes disk-based data protection, significantly reducing backup data and providing network efficient disaster recovery. NetWorker Fast Start deduplication support includes:

- Integration with Data Domain via DD Boost software drives new levels of speed and efficiency for managing data center workloads
- Client deduplication via Avamar solves critical backup challenges in remote offices and virtual environments
- Network-efficient replication with deduplication delivers fast and reliable bandwidth efficient disaster recovery protection
- A common index and media database to ensure reliability and recoverability

Integrated software and hardware deduplication solutions from EMC deliver unmatched reliability and efficiency. With NetWorker, users can easily and safely evolve from traditional to deduplicated backup protection.

FULL-VERSION NETWORKER AND NEXT-GENERATION READY

Once installed, you get full-version NetWorker, enjoying the same performance and access to NetWorker's next-generation capabilities—like deduplication, complete protection for VMware® and Hyper-V environments, disaster and granular recovery of Microsoft applications, replication management, server recovery, and EMC Disk Library media management—that NetWorker customers depend on today. This provides you with clear investment protection as your environment grows, and makes EMC NetWorker the ideal solution by providing enterprise-class capabilities at an affordable price point and cost of ownership.

CONTACT US

To learn more about how EMC products, services, and solutions help solve your business and IT challenges contact your local representative or authorized reseller—or visit us at www.EMC.com

EMC², EMC, where information lives, Avamar, NetWorker, and Data Domain are registered trademarks or trademarks of EMC Corporation in the United States and other countries. VMware is a registered trademark or trademark of VMware, Inc. All other trademarks used herein are the property of their respective owners. © Copyright 2011 EMC Corporation. All rights reserved. Published in the USA. Data Sheet 02/11 H4402.4